



Lijiacheng  
Electric

# LED Flat Panel

energy efficient | high quality



# LED Flat Panel

A complete line of commercial LED Flat Panels delivers a superior replacement solution for traditional fluorescent tube fixture and gives a revolutionary design with visually comfortable illumination. In addition, the benefit of the LED technology provides a new level of affordability. Lijiacheng LED Flat Panel provides an exceptional quality lighting environment and more productive ambiance for workplaces, retail, office and school with high efficiency. Compared with conventional fluorescent fixtures, LED offers more than 60% or more energy saving and last at least 50000 hours with DLC standard or premium compliance. Offering substantial energy savings and no mercury lamp content, LED commercial lighting is ideal for new construction and retrofit projects.

**AL**

Aluminum  
FRAME



Dimmable  
Triac Dimming



Multi Size  
SELECTABLE

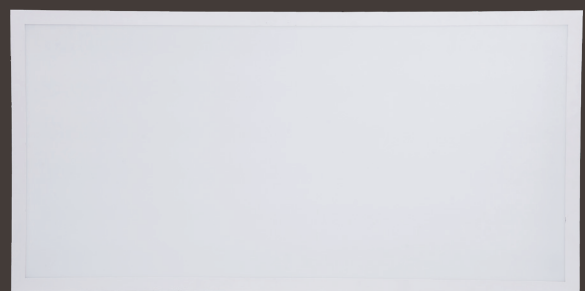


27K-50K  
CCT

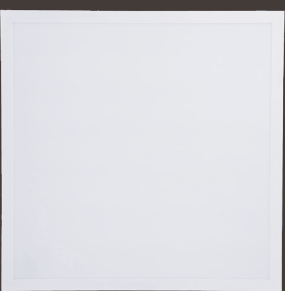




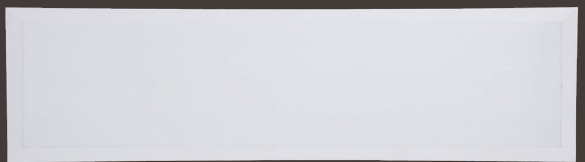
# Back-Lit LED Flat Panels



2' X 4'



2' X 2'



1' X 4'



**Dimmable**



**Multi Size**  
SELECTABLE



**30K-50K**  
CCT



**WATTAGE**  
SELECTABLE



**80/90**  
CRI



**120-277/347**  
VOLTAGE



**50,000**  
LIFETIME

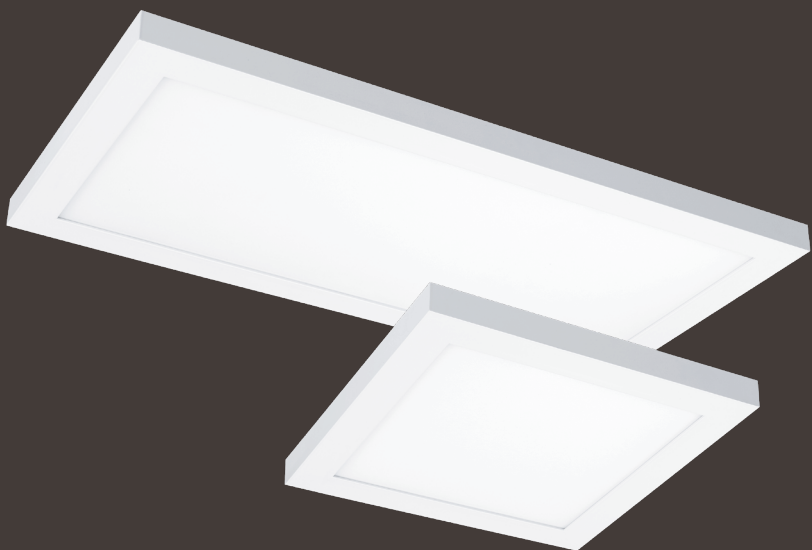
- 120-277V/347V 50/60Hz
- CRI>80/90
- PF>0.9
- Ambient temperature: -20°C to 40°C
- UL and DLC5.1 compliance
- Smooth 0-10V and 120V Triac dimming
- Durable anodized aluminum frame with high reflective, matte powder coated paint
- Luminaires are available in 1x4, 2X2, 2X4. Ideal replacement for existing T8/T12 lay-in troffer fixture, with a build-in power sources
- Surface, pendant and recessed mounting options available
- Available in wide range of color temperature from 30K-50K



DIMENSION	A	B	C
2' X 4'	47.75"	23.75"	1.65"
2' X 2'	23.75"	23.75"	1.65"
1' X 4'	47.75"	11.9"	1.63"



# Internal Driver Edge-Lit LED Flat Panels



**Dimmable**



**Multi Size**

SELECTABLE



**27K-50K**

CCT



**WATTAGE**

SELECTABLE



**80/90**

CRI



**120-277**

VOLTAGE



**50,000**

LIFETIME

- 120-277V 50/60Hz
- CRI>80/90
- PF>0.9
- Ambient temperature: -20°C to 40°C
- UL and DLC compliance
- Smooth 0-10V and 120V Triac dimming
- Durable anodized aluminum frame with high reflective, matte powder coated paint
- High quality PMMA light guide plate creates uniform light, edge to edge, for every lit spaces
- Luminaires are available in 1x1, 1x2, 2X2, 1X4 and 2X4. Ideal replacement for existing T8/T12 lay-in troffer fixture, with a build-in power sources
- Surface, pendant and recessed mounting options available



DIMENSION	A	B	C
2' X 4'	47.75"	23.75	1.1"
2' X 2'	23.75	23.75	1.1"
1' X 4'	47.75"	11.9"	1"
1' X 2'	11.9"	23.75"	1"
1' X 1'	11.9"	11.9"	1.1"



# Ultra Thin Profile LED Flat Panel



**5CCT**  
27K-30K-35K-40K-50K

**WATTAGE**  
SELECTABLE



Installation  
aperture



**Dimmable**



**Multi Size**  
SELECTABLE



**27K-50K**  
CCT



**80/90**  
CRI

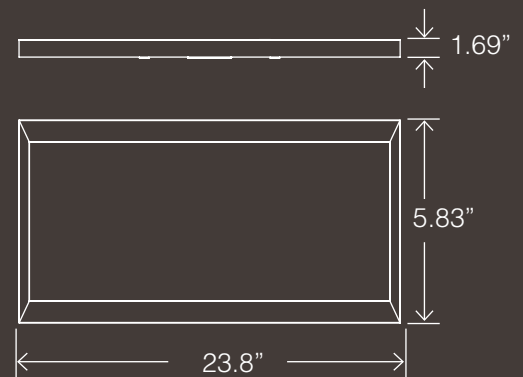
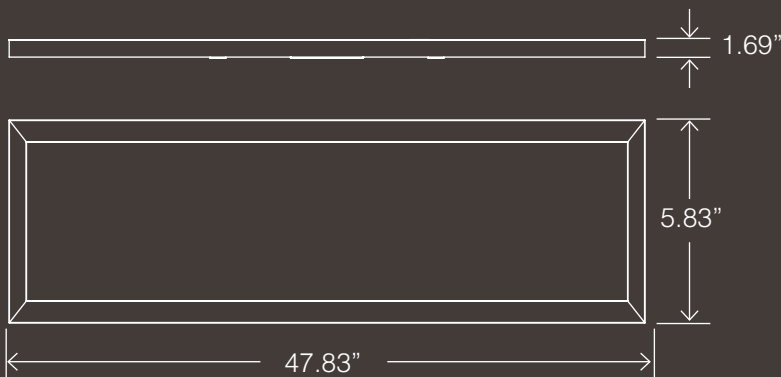


**120-277**  
VOLTAGE



**50,000**  
LIFETIME

- CCT and Wattage selectable
- 120-277V 50/60Hz CRI>80/90
- PF>0.9
- Ambient temperature: -20°C to 40°C
- UL and DLC5.1 compliance
- Aperture/Grid: 4 inch nominal aperture w /6 inch grid spacing w/acrylic light guide, aluminum frame and matte paint after fabrication finish
- Surface/Suspension and drywall frame kits optimized for use in many spaces
- Large external switches to adjust lumens and/or color before or after installation





# LED Frameless Panel



**Dimmable**  
Triac Dimming



**Multi Size**  
SELECTABLE



**30K-50K**  
CCT



**80**  
CRI



**120-277**  
VOLTAGE



**50,000**  
LIFETIME

Durable anodized aluminum frame with high reflective, matte powder coated paint

- High quality PMMA light guide plate creates uniform light, edge to edge, for every lit spaces
- Luminaires are available in 1x4, 2X2, 2X4, ideal replacement for existing T8/T12 lay-in troffer fixture, with a build-in power sources.
- Available in wide range of color temperature from 30K-50K
- 120- 277V Input, 50/60Hz
- PF > 0.9 - CRI > 80
- Ambient temperature: -20°C to 40°C
- 5 years limited warranty
- Smooth 0-10V dimming feature and compatible with a wide variety of dimmers
- UL and DLC standard compliance.



DIMENSION	A	B	C
4' X 1'	47.75"	11.92"	1.11"
2' X 2'	23.75"	23.75"	1.09"
2' X 1'	23.75"	11.92"	1.09"



## LED Flat Panel Series



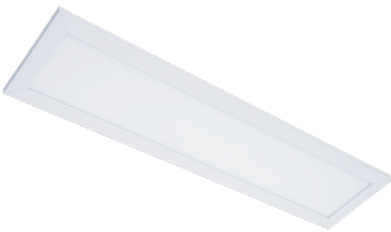
### Back-Lit LED Flat Panel

- 2' X 4'
- 2' X 2'
- 1' X 4'



### Internal Driver Edge-Lit LED Flat Panel

- 2' X 4'
- 2' X 2'
- 1' X 4'
- 1' X 2'
- 1' X 1'



### Ultra Thin Profile LED Flat Panel

- 0.5' X 2'
- 0.5' X 4'

**5CCT**  
27K-30K-35K-40K-50K

**WATTAGE**  
SELECTABLE



### LED Frameless Panel

- 2' X 4'
- 2' X 2'
- 1' X 4'

[www.ljclight.cn](http://www.ljclight.cn)

Hangzhou Lijiacheng Electric Co.,Ltd.

Address: Gaohong Industrial Park, Lin'an District, Hangzhou, China, 311307

Fax: +86-571-6110 5663

E-mail: [Chris@ljclight.com](mailto:Chris@ljclight.com)